



EXPANSION JOINT

HKR has more than 45 years of track record in design engineering expertise & production know-how marked with numerous acclaim & recognition as a global leading Expansion Joint manufacturer.



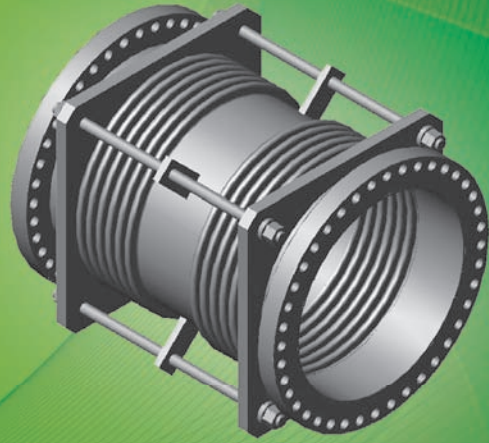
DNV·GL

ABS



www.hkr.co.kr

Metallic Expansion Joint



Features

- Installed in piping/ducting to absorb expansion and contraction caused by temperature & pressure changes
- Bellows with one or multiple plies of Stainless steel, Carbon steel, Incoloy, or Inconel
- Formed by hydro forming, Roll forming or Press forming
- Wide range of products- Universal Hinge, Gimbal, Pressure balance, Rectangular type and more



Application

- Power Generation (Fossil Fuel/Gas Turbine/Co-gen/Nuclear)
- Refineries & Petroleum Industry
- Chemical Plant
- Steel Mills & Cement Plant
- Marine (on-shore / off-shore)
- Environmental Plant



Universal Type



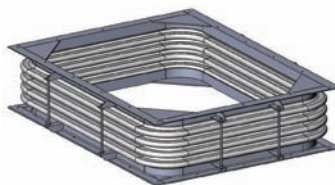
Hinged Type



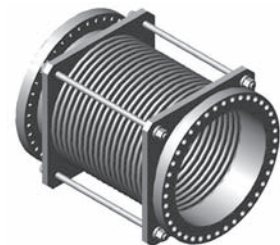
Gimbal Type



Pressure Balanced Type

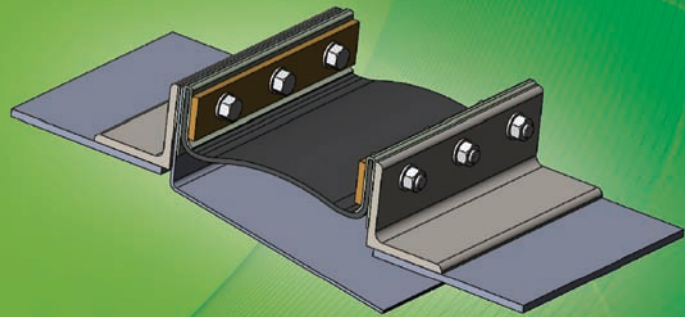


Rectangular Type

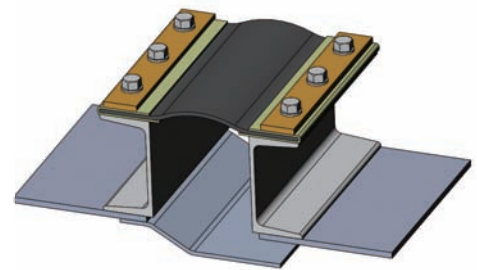
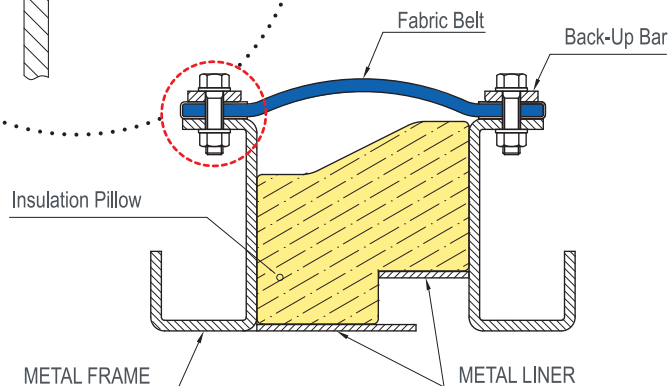
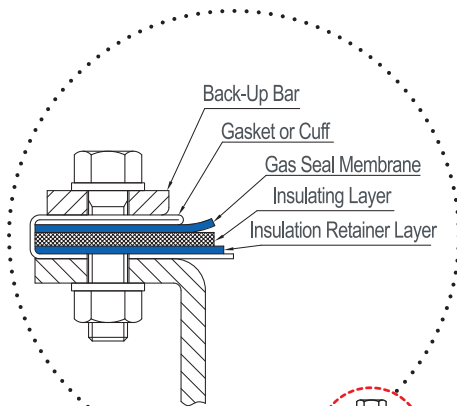


Free Type

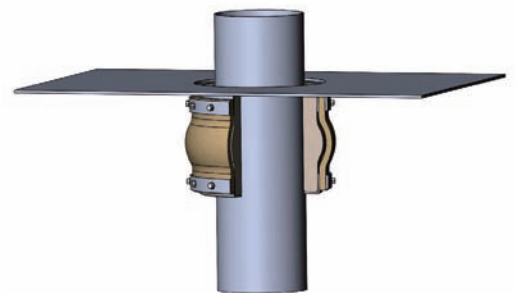
Non-Metallic Expansion Joint



Flange Type



Belt Type



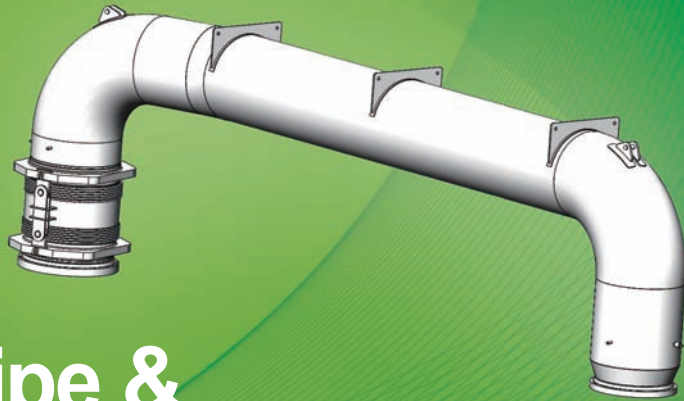
Casing Type

Features

- Wide variety of non-metallic materials, including synthetic elastomers, fabrics, insulation materials and fluoroplastic, depending on the design.
- Superior corrosion resistance at various temperature
- Minimal field assembly requirements and low maintenance costs
- Capable in any sizes in dimension
- Temperature: up to 1200deg.C

Application

- Power Generations (Fossil Fuel/Gas Turbine/ Co-gen/Nuclear/Biomass)
- Refineries & Petro-Chemical Industry
- Various Industrial Plants
- Environment Plants



Crossover Pipe & BFPT Duct (Large Bore Pipe)



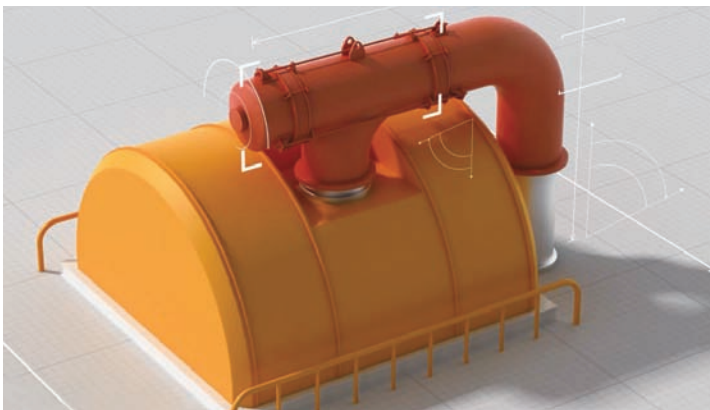
Features

- Suitable flexibility to work in different thermal movement condition between turbine and casing
- Supports major global steam turbine manufacturers such as GE, MHPS, Toshiba, Siemens and Doosan
- Expansion Joint : Pressure balance type
- Wide range of product : for 2 nozzles, 3 nozzles, 4 nozzles and BFPT duct

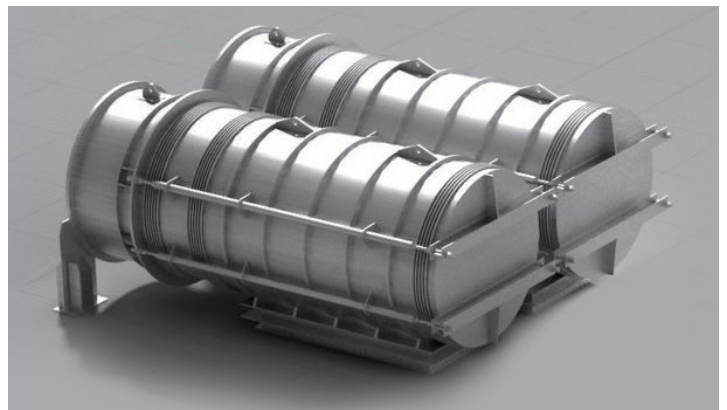


Application

- Steam turbines for Power plant
- Boiler feed water pump turbines



Crossover



BFPT Duct



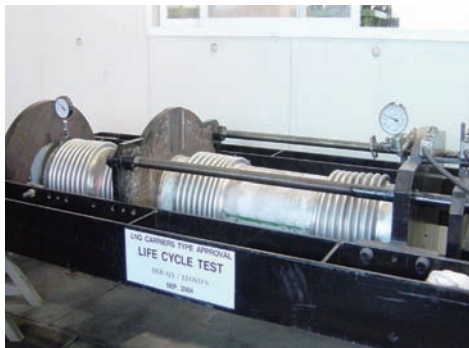
Cryogenic Bellows for LNG Carriers & Terminals

Features

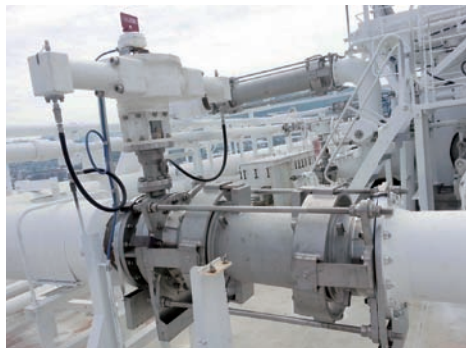
- Expansion joints from 32 up to 1465mm diameter that can withstand cryogenic temperature/environment
- Expansion joints for LNG carriers are inspected by Lloyd's Register, ABS, DNV, BV, KR, NK and GTT
- Available Materials : 316L Stainless Steel, Incoloy 825, Invar

Test & Inspection

- Non-Destructive Examination (Radiographic Test/Penetration Test)
- Squirm & Burst Test ▪ Fatigue cycle Test ▪ Cryogenic Test



Pressure Cycle Test



Installation on the ship



Operation field test

Rubber Expansion Joint

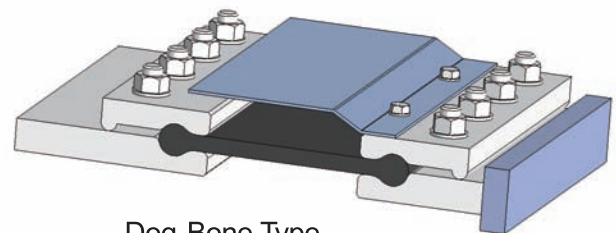


Features

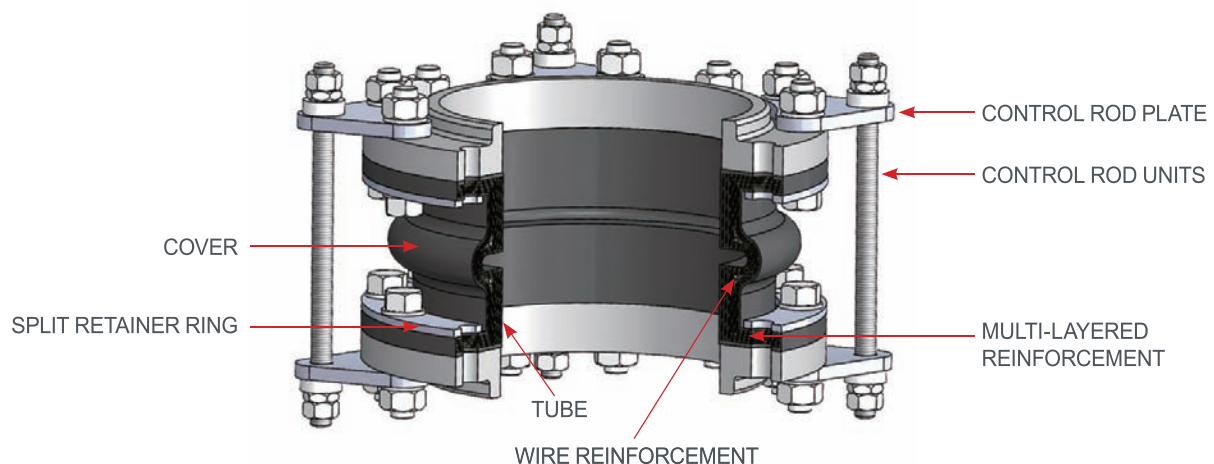
- Fabricated from natural or synthetic elastomers and fabrics with metallic reinforcements designed to provide stress relief in piping systems
- Various rubber materials applicable :
EPDM, Hypalon, Neoprene, Viton and Natural Rubber
- Spool type(Single/Multiple arch, Reducer, Filled arch) and Dog-bone type

Application

- Hydraulic Pipes, Heating Installation and Piping in power stations and in the chemical industry



Dog-Bone Type



Flexible Hose



Features

- Enhancing flex resistance and flexibility
- Variety of End Fittings : Union, Flange, Nipple, Socket, Quick coupling and etc.



Application

- Hydraulic Pipes, Heating Installation and Piping in power stations and in the chemical industry



Heat Exchanger Bellows



Features

- Installed on the shell of the heat exchanger, and restrain heat stress generated by temperature difference between shell and tube.
- ASME "U / U2" Stamp is required



Application

- Heat Exchanger



Major Customers

Domestic



Overseas



End-User



www.hkr.co.kr

53 Ugakgol-Gil, Susin-Myeon, Dongnam-Gu, Cheonan-Si, Chungcheongnam-Do, 31252, Rep. of Korea
 TEL : +82.2.6947.5513 FAX : +82.2.6947.5510 EMAIL : sales@uet-hkr.co.kr